



Annual Review
2010/2011




Support from the heart of the community

*This brochure has been created by staff and volunteers at the Wimbledon Guild
with help and support from Haygarth of Wimbledon Village.*



Contents

Welcome	5
Support from the Heart of the Community	6
What we did in 2010/2011	9
<i>Advice Services</i>	9
<i>A Place to Meet</i>	9
<i>Befriending</i>	10
<i>Christmas Gift Collection</i>	10
<i>Clubs and Classes for over 50s</i>	11
<i>Counselling Service</i>	11
<i>Drake House</i>	12
<i>Harvest Festival</i>	13
<i>Housing</i>	13
<i>Lunch Club for over 65s</i>	13
<i>Rosemary Lodge, Care Home with Nursing</i>	13
<i>Second Time Around Project</i>	14
<i>Small Grants Programme</i>	14
<i>Social Centre for over 65s</i>	15
<i>Volunteering Programme</i>	16
<i>Other Services at Guild House</i>	17
Thank You	19
Fundraising & Donations	21
Get Involved	23
Summarised Financial Statements	24
2010/2011 Supporters	26



“We need your
support to meet the
challenges ahead”

*Russell Humphreys
Chief Executive Officer*



Welcome

Since 1907 we have supported the most vulnerable people in our community. Throughout this year many local people experiencing financial, material and emotional hardship came to us because they were unable to find help elsewhere. We offered them skills, knowledge and support to deal with the issues they faced.

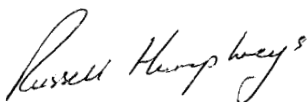
Demand for our wide-ranging services is increasing, and we subsidise many of our services so that people will find them affordable. In 2010/2011 our Clubs and Classes Programme expanded considerably. Over 600 items of donated furniture were delivered to local homes. Our Family Therapy team counselled 38 new client families and our advice work grew substantially. The Guild is currently providing more services to more people than at any other time in its history.

This year, the first in a series of local government cutbacks has taken place, and this is already having a significant impact on local charities. Government initiatives such as self-directed support are affecting the ways in which adult social care is provided at a local and national level.

We are proud of the work we have achieved alongside over 50 partners this year. They helped us find new clients, look after existing ones and raise vital funds. Next year, as the harsh economic climate bites even further, we will together be supporting even more local people.

Once you have read our Annual Review you might like to get involved, please don't hesitate to get in touch.

We need your support to meet the challenges ahead.



Russell Humphreys
Chief Executive Officer

Support from the Heart of the Community

About Us

Our wide-ranging services support people of all ages across Merton facing a variety of situations. They use our free independent and professional advice services and pay only what they can afford for the counselling received from our trained counsellors. Families are key clients for our free furniture recycling project and Small Grants Programme. The over 50s enjoy a range of clubs and classes which we organise and our social centre and lunch club welcome over 65s each weekday. Our trained and vetted befrienders make regular visits to local people who are virtually housebound. We run a charity shop in Mitcham and we own and run Rosemary Lodge, our care home with nursing close to Wimbledon Common. Our premises are used by 27 groups and over 270 volunteers currently take part in our volunteering programme.

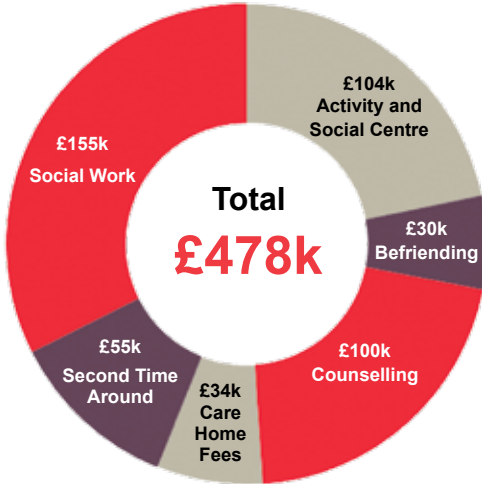
<p>Our Principles</p>	<p><i>To provide comfort, help and advice to local people.</i></p>	<p>Our Aims</p>	<p><i>To help people in our community in the most effective way possible, by bringing together professionals, volunteers and existing welfare agencies.</i></p>
<p>Our Values</p>	<p><i>Our clients' welfare has been at the heart of everything we do since 1907. Each area of need is discussed thoroughly, with emphasis on who will benefit from our help and how.</i></p>	<p>Our Vision</p>	<p><i>To be seen as an organisation which responds quickly and practically to the needs of local people.</i></p>

Our Support in Numbers

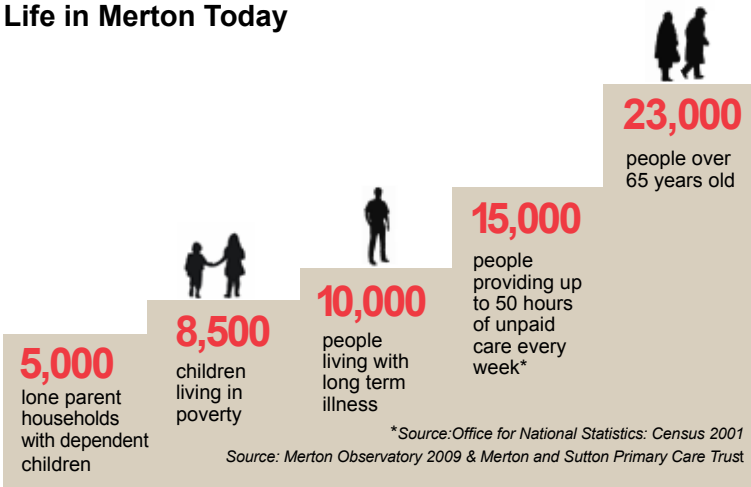
<p>£478k</p>	<p>subsidised our services</p>	<p>21,000</p>	<p>volunteer hours provided</p>
<p>£60k</p>	<p>value of donated goods</p>	<p>4,500</p>	<p>counselling sessions provided</p>
<p>£19k</p>	<p>given out in small grants</p>	<p>2,000</p>	<p>activity sessions for over 50s</p>
<p>1,600</p>	<p>befriending visits arranged</p>	<p>4%</p>	<p>of income from government funding</p>

Supporting our Services

During 2010/2011 we used our financial resources to support our services as follows:



Life in Merton Today



A moment shared

*Around the World in 80 Minutes
the Social Centre's musical extravaganza*



What we did in 2010/2011

We are here to help and support our local community. During the year our staff and volunteers got to know clients and visitors quickly. The resulting warmth and trust often led to worries and problems being aired. Every day the expertise of people across the Wimbledon Guild, and our partners, was used to resolve them. Respecting the individual's independence, wellbeing and dignity was paramount.

Advice Services

(through our CAB advisor and Social Welfare staff)

Our advice services team provided free, independent, professional, and confidential support. Local people had questions on a wide range of issues including redundancy, changes in benefits entitlements, care provision and debt counselling. We helped clients to find many of the answers they needed, and were able to advocate on their behalf.

These services help alleviate poverty and improve living standards for local people. A tougher economic climate has brought more people to seek advice from our CAB worker and the Social Welfare department this year.

These services are completely free to local people and are fully funded by the Wimbledon Guild.

A Place to Meet

We regard our premises and facilities as a community asset and use them to support local groups. This year more than 27 groups made use of our premises to offer additional help and support to local people.

We provided office space this year to Faith in Action (Merton Homelessness Project), Merton Home Tutoring Service and SSAFA Forces Help. The local MP held regular surgeries at Guild House.

A full list of the organisations we welcomed this year can be found on page 17 of this review. We will continue to support local organisations in whatever way possible.

Befriending

Our befriending programme expanded this year to include clients from a neighbouring scheme which closed. For 50 older local people who found it difficult to leave their homes, we arranged visits from trained and vetted volunteer 'befrienders'.

Warm and lasting friendships were created and during the poor winter weather befrienders called to see if anything was needed. Befrienders often assisted with tasks such as helping with paperwork or getting some shopping. All this gave 'peace of mind' to family members who do not live locally.



Befriending friends!

Christmas Gift Collection

In December 2010, our annual Christmas Gift Collection was supported by local schools, collecting gifts for children, teenagers, and adults of all ages. Despite the difficult economic times people were generous and thoughtful with their gifts.

Presents were delivered to local families who could not otherwise have afforded to buy them. The gifts were also given to local people in women's refuges, mother and baby units, family centres and families referred to us by a number of agencies.

Clubs and Classes for over 50s

Just over 2,000 activity sessions were offered as part of our Clubs and Classes programme this year, supporting 'active' lifestyles for the over 50s. This is almost 15% more than last year. A small fee was charged for most classes.

People came to learn new skills, rekindle old hobbies and meet others with similar interests. Many activities were suitable for people of all mobility levels from Pilates to art classes and tai chi to talks.

Specialist activities from support groups such as the Stroke Club were an integral part of the programme. Our comprehensive directory for the over 50s, 'Social & Leisure Activities in Merton', was updated and distributed across the borough.

Counselling Service

The aim of counselling is to enable people to lead richer, more fulfilling and resourceful lives. We have provided a professional, confidential and affordable service since 1988.

The service is heavily subsidised by the Wimbledon Guild. It is completely free for under 18s and adult clients pay only what they can afford. About 30% of clients were in full time, paid employment and 25% were taking medication to help them cope. Approximately 10% experienced suicidal thoughts or feelings, this figure is considerably higher in younger clients. People came for an average of 26 weeks: we are unusual in offering support for this length of time.

Local closures this year mean we are now the only voluntary organisation in Merton providing affordable and accessible counselling in areas such as bereavement, youth counselling and family therapy. New partnerships this year with Merton Vision and the Metropolitan Police enabled us to support greater numbers of local people.

The service is accredited with the British Association of Counselling and Psychotherapy. Counsellors are carefully selected and vetted and are either fully trained, or in the final years of training. All are professionally supervised.

Counselling for Individuals

Over 3,500 one-to-one counselling sessions were offered to local people

What we did in 2010/2011

this year. Around two thirds of clients were seen within a week of making contact.

Group Therapy Counselling

Around 500 sessions were provided. Group Therapy is helpful to people who find it difficult to cope in settings such as the workplace. The Continuity of Care group, founded by Josephine Lomax-Simpson, continues to meet with the input of a new part-time facilitator.

Youth Counselling

In 2010/2011, 169 sessions were given to young people between 15 and 24 years of age. To reach this age group more effectively we revamped the youth counselling web page and set up a dedicated Facebook page.

Family Therapy

Our Family Therapy service helped local people deal with problems affecting several members of the same family. We worked with more than 50 families, and provided 301 sessions. Clients came from a range of ethnic backgrounds.

Training events and lectures

During 2010/2011 we ran 37 high-quality training days for counsellors. This generated income to help fund our services and brought new, high-calibre volunteer counsellors to the Guild.

A university partnership is currently being explored. The opportunity to tender for external contracts, if appropriate, may be considered in the next few years.

Drake House

We regard Drake House, our venue for hire, as a community asset and it has been an important hub this year. Commercial lettings in quieter booking periods enabled us to offer voluntary organisations a reduced rate for using the venue.

It is centrally and conveniently located on St George's Road, Wimbledon. Drake House features a large hall with flexible staging and seating for up to 120 people, a meeting room with seating for approximately 45 people, and a servery. This year it was used for a range of events including children's birthday parties and corporate training days.

Harvest Festival

During 2010/2011 we received tremendous support from schools and churches across the borough for our traditional Harvest Festival collection. Hampers of goods were collected, sorted, and distributed in October to about 20 organisations, charities, help centres and to some of our own clients.

Housing

We own 64 dwellings in the Wimbledon area and one in Mitcham: all are managed externally by Bells Commercial. The rental income from these properties helps to finance our services.

Lunch Club for over 65s

The Lunch Club welcomed up to 14 customers each weekday. They enjoyed a freshly prepared, nutritious two course lunch in our relaxed informal dining room, at a reasonable price. It was also a chance to catch up with friends.

This year we sought to increase the numbers of local people attending the Lunch Club. Staff also made visitors aware of the range of services offered by the Guild including Rosemary Lodge.

Rosemary Lodge, Care Home with Nursing

Rosemary Lodge is run on a not for profit basis. Our 39 residents have their day structured around their individual needs. The dignity of each individual resident is a priority and is underlined in the recruitment and on-going training of staff. This includes specialist dementia training to meet the needs of the rising number of residents affected.

The results of our updated customer satisfaction survey indicated our high standard of care for residents was a real strength. A new activities programme enabled residents to live as active a life as their circumstances would allow. This included outings to local places of interest.

Residents kept in touch with friends and family by using the new wireless network at Rosemary Lodge. Family get-togethers and special celebrations were hosted throughout the year.

What we did in 2010/2011

Students from the London College of Garden Design submitted ideas for improving the garden. Final designs, establishing a garden for people with disabilities and dementia, have been agreed with residents, their families, friends and carers. Work will commence later in 2011.

We will continue to work closely with our partners, health professionals and relatives of residents to maintain standards of care and satisfaction levels.

Second Time Around Project

Over 600 items of donated goods with an estimated value of £60,000 were distributed to local homes. Our partners helped us find people who needed them. Most collections were in the north and south of the borough, while the majority of deliveries were in Mitcham and the east.

Local people were pleased to receive everything from a cot and pram for their newborn baby to enough furniture for an entire flat. The Second Time Around team worked closely with the Guild's Small Grants Programme, matching items in stock to requests.

The drive to improve the quality of furniture received this year meant a reduction in the number of items sent to landfill. We will continue to focus on this as a means of reducing the Guild's carbon footprint.

Small Grants Programme

We gave Merton residents of all ages just over £19,000 in small grants this year. The money came from our own Welfare Fund and a number of other specialist funds entrusted to us over the years which we administer. In every case the grant was used to pay for items people desperately needed but could not afford. Every application was considered swiftly and thoroughly.

This year grants were given to pay for food for children and people received furniture; bedding; clothing; heating appliances and white goods. Grants also paid for emergency house repairs; an exam entrance fee; reglazing a front door; mobility scooter batteries and utility bills. Requests for school uniforms and educational trips continue to rise. The ability to be included fully in school life helps to reduce any bullying children may experience.

Wherever possible this year, we used furniture from Second Time Around instead of a cash grant. In September a local family was supplied with donated furniture worth £800 and a grant used to buy a cooker. Our partners helped us to find people who needed the support of this programme. As the economic downturn continues these links will remain vital.

Social Centre for over 65s

Up to 26 local people came to our Social Centre each weekday. Some suffered from a range of medical conditions including Parkinson's disease, impaired vision and cancer. The majority of our visitors were female and most lived on their own.

Each day, after a welcoming cup of tea or coffee, visitors enjoyed activities, good company and a healthy, freshly prepared, two course meal.



Handcrafted frames made by girls from Ricards Lodge School and our Social Centre visitors

The team organised an interesting range of activities, new for this year was a Scrabble club. Entertainment was provided by people of all ages from local schools, drama, dance and music groups. Guest speakers, visits to museums and places such as Kew Gardens made it a busy and exciting year at the Social Centre.

In September, 80 customers and volunteers got together for our annual

What we did in 2010/2011

musical extravaganza, Around the World in 80 Minutes. Bishop Gilpin School generously paid for lunch at this event with the proceeds from a series of fundraising activities.

During the worst of the winter weather, the Social Centre had to close because pavements across the borough were treacherous. Customers were contacted daily to ensure they had everything they needed and staff took shopping to several people.

This year our updated customer satisfaction survey provided useful information about how positively our clients feel about this service, and how we could make things even better.

Funding from the London Borough of Merton for the Social Centre has been cut by 23% for the year 2011/2012. We will absorb the loss during this period but a full review of the service may be needed if further cuts are made. We will continue to support independent, healthy living and social interaction among older people in the community.

Volunteering Programme



Two of our volunteers at the Wimbledon Village Fair

We are very grateful to over 270 talented volunteers who gave their time to support the delivery of our services this year. People of all ages and from every walk of life got involved. They sang and assisted at our Social Centre; provided counselling; helped at our charity shop; worked at fundraising events including the Wimbledon Village Fair; supported our office staff and acted as trustees.

This year we undertook the demanding process of applying for the prestigious Investing in Volunteers quality standard. It was overseen by our Volunteer Co-ordinator and we were delighted to achieve the standard in Spring 2011.

Our volunteering scheme is flexible and offers unemployed people the opportunity to keep up their skills and develop new ones whilst job hunting.

Other Services at Guild House

During 2010/2011 a number of other services available at our premises to all local people included chiropody, hairdressing and alternative therapies such as reflexology, Indian head massage and Reiki.

Organisations we welcomed this year

Alcoholics Anonymous	Relate
Asian Elderly Group of Merton	Rethink
Dance for People with Parkinson's	South London Lymphoma Support Group
Diabetes UK	Soldiers, Sailors, Airmen and Families Association (SSAFA) Forces Help
Dual Diagnosis Anonymous	The Guild Knitting Club
Faith in Action, <i>the Merton Homelessness Project</i>	The Guild Wednesday Club
Headway	The National Osteoporosis Society
Mencap	The Stroke Club
Merton Hard of Hearing	University of the Third Age groups
Merton Home Tutoring Service	Volunteer Centre Merton
Merton Scientific Society	Wimbledon Bookfest Committee
Merton Unity Network	Wimbledon Cancer Friendship Group
Narcotics Anonymous	Wimbledon Chinese Cultural Group
Pelvic Radiation Disease Association	

Sainsbury's staff joining in the fun at the Social Centre

The customers at Sainsbury's, Wimbledon chose us as their charity of the year



Our partners

We are very grateful to the following partners who this year helped us to support people across Merton: SSAFA Forces Help; Commonside Community Development Trust; Merton Social Services; Jigsaw 4U; Grenfell Housing Association; Homestart Merton; Merton Women's Refuge; CAB; Relate; Rethink; Carer Support Merton; Christian Care and CDSSL Drug Rehabilitation Service and school nurses.

Our supporters

Individuals, schools, businesses, organisations, staff and volunteers helped us in so many ways this year. Their support meant that we were able to run our services and further develop many of them.

We would also like to thank Sainsbury's customers in their Worples Road branch who selected us as their charity of the year for the second consecutive year. A very productive partnership with Haygarth Group Limited, a marketing agency based in Wimbledon Village, enabled us to undertake work we could not otherwise have afforded. Next year will see the implementation of this work.

Our fundraisers

We had some amazing support this year from new partners. The Wimbledon Windmilers raised just under £2,000 through their summer 10k run. Staff from Knight Frank's Wimbledon office, Guild staff and a 15 year-old volunteer, raised almost £3,000 in another 10k run. Two local mums individually raised over £800 through a selling event and a cookery demonstration. These events offered new opportunities to tell people about our work. Huge thanks go to everyone involved.

Local schools and churches played an important part in our fundraising activities, generating over £3,000 through various events. The Guild's Knitting Bees contributed over £1,000 too through the sale of their beautiful, hand-knitted work, and £3,000 was raised by the annual Lads Lunch.

We would also like to thank Wimbledon Books and Music who donated goods to us and Elys who welcomed our Knitting Bees to their department store every Friday.

All the fun of the Wimbledon Village Fair



Fundraising & Donations

During 2010/2011 we raised just over £38,000 through a variety of fundraising and donation initiatives. The Wimbledon Village Fair, and the Mitcham Charity Shop were the two main fundraisers.

Wimbledon Village Fair

The 20,000 visitors to the 2010 Wimbledon Village Fair enjoyed 200 craft and food stalls, live entertainment throughout the day, a horse show and fun dog show and a range of family entertainment. We are very grateful to everyone who supported the event, which has become a high point of the local summer calendar.

Maintaining sponsorship levels for the fair was difficult again this year but we were delighted to receive cross community support.

Mitcham Charity Shop

Our charity shop had a good year. During 2010/2011 the manager and her team of volunteers provided a surplus of over £18,000. The shop was generously supported by people across Merton who donated goods. Some items were sold on eBay, producing a higher return. A partnership with the Aviary Society also meant we could sell larger items we were unable to store.

The team at the shop also made local people aware of the range of services on offer at the Guild. Within Mitcham are some of the most deprived wards in the country, and we actively support people in this area.

Legacies

During 2010/2011 we received over £189,000 in legacy donations. These legacies are vital in enabling us to be as innovative as possible when meeting clients' needs.

We remain dedicated to providing support from the heart of the community.

“We were delighted to raise so much money for this excellent cause”

*Dominic Pasqua
Knight Frank, Wimbledon*



This year we needed an extra £478,000 to fund the shortfall in the cost of providing our services. We need your support to meet the tough challenges ahead. There are many ways of getting involved and we can help you find the option that works best for you. Together we can make a real difference to people across Merton.

Fundraise for us

Our Marketing and Fundraising team will be happy to offer you advice and support on any event you wish to organise. Fundraising can be fun so get together with friends, family or work colleagues and have a go. Call 020 8946 0735 to speak to the team or email us at events@wimbledonguild.co.uk.

Make a donation

£15	covers the cost of organising a visit to an older person in need of some company
£50	pays for a counselling session for someone in real distress
£1,000	pays for the annual musical event for our Social Centre visitors

You can donate online at www.wimbledonguild.co.uk or by post. Please consider Gift Aid when making your donation, it won't cost you a penny but will provide more income from your gift.

Leave a legacy

Why not support the Wimbledon Guild in your will? Although much has changed since we were set up in 1907 we can still make your legacy go a long way. Legacies enable us to expand and develop services for local people. Leaving a legacy can be tax efficient: a solicitor can advise you.

Become a volunteer

Whether you want to keep up your skills, gain work experience or give something back to your community, we can make use of your time and talents. Why not become a befriender or counsellor, work alongside our staff or help out at our events. To find out more, contact our Volunteer Co-ordinator on 020 8946 0735 or email the team on volunteer@wimbledonguild.co.uk.

Summarised Financial Statements

SUMMARISED STATEMENT OF FINANCIAL ACTIVITIES

For the Year Ended 31 March 2011

	Unrestricted Funds £000	Restricted Funds £000	Total 2011 £000	Total 2010 £000
INCOMING RESOURCES				
Incoming Resources from Generated Funds	626	11	637	513
Incoming Resources from Charitable Activities	2,382	125	2,507	2,287
TOTAL INCOMING RESOURCES	3,008	136	3,144	2,800
RESOURCES EXPENDED				
Costs of Generating Funds	276	-	276	285
Charitable Expenditure	2,395	142	2,537	2,558
Governance Costs	43	-	43	51
TOTAL RESOURCES EXPENDED	2,714	142	2,856	2,894
NET INCOMING (OUTGOING) RESOURCES				
	294	(6)	288	(94)
Gains on investment assets	118	-	118	670
NET MOVEMENT IN FUNDS				
	412	(6)	406	576
Fund balances brought forward	6,058	57	6,115	5,539
FUND BALANCES CARRIED FORWARD	6,470	51	6,521	6,115

SUMMARISED BALANCE SHEET

As at 31 March 2011

	2011 £000	2010 £000	2011 £000	2010 £000
FIXED ASSETS				
Tangible assets	3,273	3,384		
Investments	3,053	2,635		
	<u>6,326</u>	<u>6,019</u>		
CURRENT ASSETS				
Debtors	211	259		
Cash	218	141		
Creditors	(234)	(304)		
NET CURRENT ASSETS	<u>195</u>	<u>96</u>		
NET ASSETS	<u>6,521</u>	<u>6,115</u>		
Financed by:				
FUNDS				
Restricted funds			51	57
Unrestricted funds				
Free Reserves			3,196	2,685
Fixed Asset Reserves			3,273	3,372
Designated Welfare Funds			1	1
			<u>6,521</u>	<u>6,115</u>

Summarised Financial Statements

These summarised financial statements are a summary of the information extracted from the statutory financial statements for the year ended 31 March 2011. They may not contain sufficient information to allow for a full understanding of the financial affairs of the Charity. For further information, the full annual accounts, the Auditor's Report and the Trustees' Report should be consulted. Copies of these can be obtained from the Charity on request or via our website www.wimbledonguild.co.uk.

The financial statements were approved on 11 July 2011. The accounts have been audited by Crowe Clark Whitehill LLP who issued an unqualified report on the full annual financial statements and on the consistency of the Trustees' Report with those financial statements.

Their report on the full annual financial statements contained no statement under sections 498(2) (a), 498(2) (b) or 498 (3) of the Companies Act 2006.



S W deM Leathes FCA
Honorary Treasurer
The Wimbledon Guild of Social Welfare
11 July 2011

Independent Auditors' Statement to the Trustees of Wimbledon Guild of Social Welfare

We have examined the summarised financial statements set out on page 24.

Respective responsibilities of trustees and auditors

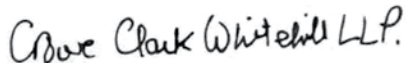
You are responsible as trustees for the preparation of the summary financial statements. We have agreed to report to you our opinion on the summarised statements' consistency with the full financial statements, on which we reported to you on 17 August 2011.

Basis of opinion

We have carried out the procedures we consider necessary to ascertain whether the summarised financial statements are consistent with the full financial statements from which they have been prepared.

Opinion

In our opinion the summarised financial statements are consistent with the full financial statements for the year ended 31 March 2011.



Crowe Clark Whitehill LLP
Statutory Auditor
London
17 August 2011

2010/2011

Major donors and supporters in the year included:

The Estate of Louise M Eales
The Estate of J Frances Harff
The Estate of G W D James
Haygarth Group Limited
Knight Frank
The Lads Lunch
The London Borough of Merton
The Peacock Trust
Sainsbury's

St Mark's Church Wimbledon
St Mary's Church Wimbledon
The Taylor Family Foundation
The Tobit Trust
Trinity United Reformed Church Wimbledon
Wimbledon Village Business Association
Wimbledon Windmilers
Local Trusts

2010 Wimbledon Village Fair:

The All England Lawn Tennis & Croquet Club
Audi
Bells Commercial Ltd.
Elys of Wimbledon
Emmanuel Church Wimbledon
Esporta Health Club
Hallmark Healthcare (SW19) Ltd.
Holden Harper
HSBC
Intercash
Jackson Stops & Staff
Jane Bretton
Knight Frank
London Borough of Merton
Marcus Beale Architects

Morrison's Solicitors
New Wimbledon Theatre
Paul Strank Roofing
R G Jones
Robert Holmes & Co.
Stone Lion Veterinary Centre
Talkback Thames
Time & Leisure Media Group
TWM Solicitors
Venture Retail Limited
Wimbledon & Putney Commons
Conservators
Wimbledon Nannies
Wimbledon Village Stables
Young & Co's. Brewery

Schools that helped us this year:

Abbotsbury Primary School
All Saints C of E Primary School
Bishop Gilpin C of E Primary School
Blossom House School
Bond Primary School
Dundonald Primary School
Garfield Primary School
Hall School Wimbledon
Hollymount School
King's College School
King's College Junior School
Linden Lodge School
Merton Abbey Primary School
Merton Park Primary School
Pelham Primary School
Poplar Primary School

Raynes Park High School
Ricards Lodge High School
St Mary's Catholic Primary School
St Matthew's C of E Primary School
The Holy Cross School
The Norwegian School in London
The Priory C of E School
The Rowans School
The Study Preparatory School
Ursuline High School
Ursuline Preparatory School
Willington School
Wimbledon Chase Primary School
Wimbledon High School
Wimbledon Park Primary School

Other major supporters:



Wimbledon Books  Music

Sainsbury's
Try something new today





The Wimbledon Guild of Social Welfare
Guild House, 30/32 Worple Road,
Wimbledon, London SW19 4EF
T 020 8946 0735 F 020 8296 0042
E info@wimbledonguild.co.uk
W wimbledonguild.co.uk



**INVESTORS
IN PEOPLE**

A Company Limited by Guarantee.
Registered in England Reg. No. 383330
Registered Charity No. 200424